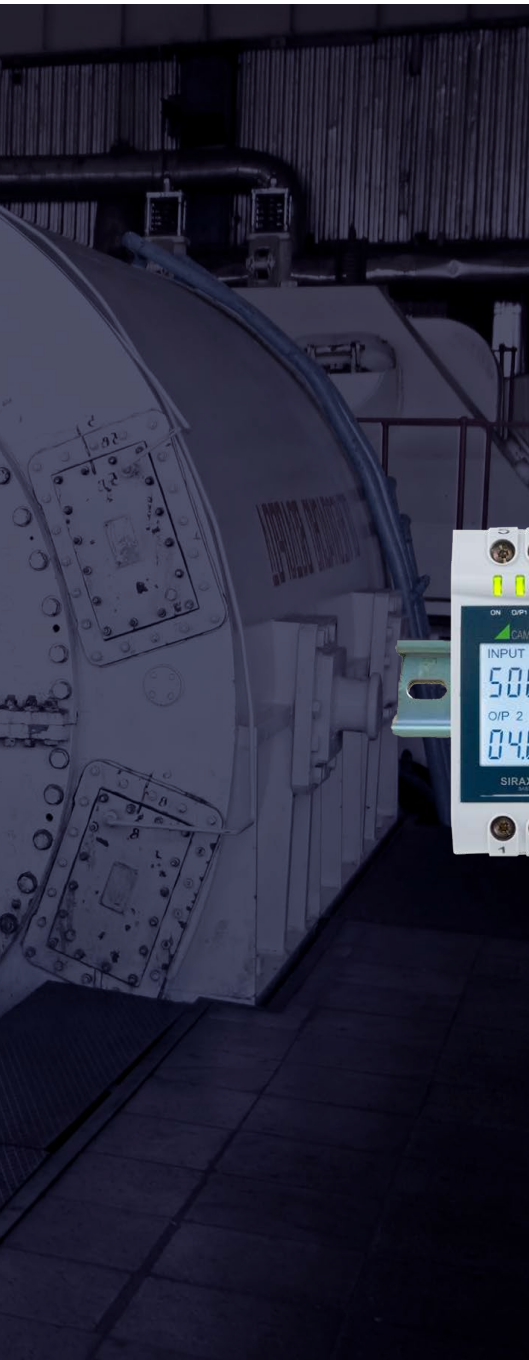


# COMPACT TRANSDUCERS FOR HEAVY CUR- RENT VARIABLES

DIN RAIL TOP-HAT RAIL-  
MOUNTED DEVICES FOR  
MEASUREMENTS IN HEAVY  
CURRENT SYSTEMS



## SIRAX SERIES OF MEASURING TRANSDUCERS

SIRAX BT5100 • SIRAX BT5200 • SIRAX BT5300 • SIRAX BT5400



DIN rail top-hat rail-mounted devices for measurements in heavy current systems



Camille Bauer Metrawatt offers a wide range of high-quality measuring instruments for all tasks in heavy current systems.

With our DIN rail top-hat rail-mounted devices of the SIRAX series, we complement the portfolio of unifunctional measuring transducers for a very good price-performance ratio.

These devices have the basic functionalities of a measuring transducer and are used as cost-effective standard solutions for safe acquisition of a measured variable in a one-phase or three-phase heavy current system.

They convert a heavy current variable such as

current, voltage, frequency or power, respectively, into a low-voltage signal (current or voltage).

The devices feature an LCD display and may be programmed by the buttons on-site or centrally via RS485 Modbus RTU and the CB-Configurator software. In addition, the measured values may be visualised, stored and evaluated via SMARTCOLLECT. The SIRAX transducer series is designed for universal use in industrial machines and plants of automation and energy engineering.

## COMPACT

---

Compact and robust housing

Measuring input for a measured variable (voltage, current, frequency or power)

On-site programming via two push buttons

Password protection

## COMMUNICATIVE

---

Clear representation of measured data via LCD display with backlit

Two configurable outputs

RS485 interface with Modbus RTU

Software for configuration, data management and visualization

## RELIABLE

---

Accuracy class 0.2

High quality guarantees plant safety

3 years of warranty



## TECHNICAL DATA

	BT5100	BT5200
Type Connection types	Voltage One-phase	Current One-phase
<b>INPUTS</b> Nominal input Voltage [ $U_N$ ] Voltage converter primary value [PT] Nominal current [ $I_N$ ] Current transformer primary value [CT] Nominal frequency Power consumption Overload capability	230 V AC L-N 57...400 kV — — 45...65 Hz < 0.6 VA 1.2 x $U_N$ permanent 2 x $U_N$ , 10x1 s, 10 min.	— — 1...5 A 1...9999 A 45...65 Hz < 0.2 VA 1.2 x $I_N$ permanent 10 x $I_N$ , 5x3 s, 5 min. 50 x $I_N$ , 1x1 s, 1 h
<b>POWER SUPPLY</b>	60...300 V AC/DC $\pm 5$ % 24...60 V AC/DC $\pm 10$ %	60...300 V AC/DC $\pm 5$ % 24...60 V AC/DC $\pm 10$ %
<b>MEASUREMENT UNCERTAINTY</b> Measurement uncertainty Measurement uncertainty phase angle, power factor	0.2 x C —	0.2 x C —
<b>ANALOG OUTPUTS</b> Linearization Range	Linear / kinked 0...20 mA / 4...20 mA or 0...10 V	Linear / kinked 0...20 mA / 4...20 mA or 0...10 V
<b>COMMUNICATION</b>	Standard RS485: Modbus/RTU	Standard RS485: Modbus/RTU
<b>ENVIRONMENTAL CONDITIONS</b> Operating temperature Storage temperature Temperature influence Relative humidity Operating altitude	0 ... 23 ... 45 °C -40...70 °C $\pm 0.2\%$ / 10 °C $\leq 75\%$ $\leq 2000$ m above sea level	0 ... 23 ... 45 °C -40...70 °C $\pm 0.2\%$ / 10 °C $\leq 75\%$ $\leq 2000$ m above sea level
<b>SAFETY</b> Protection class Pollution degree Measuring category Protection according to EN 60529	II (protection insulation acc. to EN61010) 2 CATIII IP40 housing, IP20 terminals	II (protection insulation acc. to EN61010) 2 CATIII IP40 housing, IP20 terminals
<b>MECHANICAL PROPERTIES</b> Display Housing material Flammability class Weight Dimensions [W x H x D]	LCD Lexan 940 (polycarbonate) V-0 acc. to UL94, self-extinguishing, non-dripping, free of halogen approx. 400 g 43.75 x 65.5 x 106.5 mm	LCD Lexan 940 (polycarbonate) V-0 acc. to UL94, self-extinguishing, non-dripping, free of halogen approx. 400 g 43.75 x 65.5 x 106.5 mm
<b>ORDER CODE</b>	175267 [60...300 V AC/DC] 194985 [24...60 V AC/DC]	175283 [60...300 V AC/DC] 194993 [24...60 V AC/DC]



BT5300
Frequency One-phase
230 V AC L-N – – – 45...55 Hz, 48...52 Hz, 55...65 Hz, 45...65 Hz < 0,6 VA 1.2 x U <sub>N</sub> permanent 2 x U <sub>N</sub> , 10x1 s, 10 min.
60...300 V AC/DC ±5 % 24...60 V AC/DC ±10 %
0.2 x C –
Linear / kinked 0...20 mA / 4...20 mA or 0...10 V
Standard RS485: Modbus/RTU
0 ... 23 ... 45 °C -40...70 °C ± 0.2% / 10 °C ≤ 75% ≤ 2000 m above sea level
II (protection insulation acc. to EN61010) 2 CATIII IP40 housing, IP20 terminals
LCD Lexan 940 (polycarbonate) V-0 acc. to UL94, self-extinguishing, non-dripping, free of halogen approx. 400 g 43.75 x 65.5 x 106.5 mm
175308 [60...300 V AC/DC] 195001 [24...60 V AC/DC]

BT5400
Power One-phase 3-phase 3-wire balanced or unbalanced load 3-phase 4-wire balanced or unbalanced load
100...500 V 100...692 kV 1...5 A 1...9999 A 25...60 Hz < 0,6 VA (voltage) / < 0,2 VA (current) 1.2 x U <sub>N</sub> / I <sub>N</sub> permanent 2 x U <sub>N</sub> , 10x1 s, 10 min. / 10 x I <sub>N</sub> , 5x3 s, 5 min. 50 x I <sub>N</sub> , 1x1 s, interval 1 h
60...300 V AC/DC ±5 % 24...60 V AC/DC ±10 %
0.2 x C 0.5 x C
Linear / kinked Unipolar 0...20 mA / 4...20 mA or 0...10 V Bipolar -20...0...+20 mA or -10...0...+10 V
Standard RS485: Modbus/RTU
0 ... 23 ... 45 °C -40...70 °C ± 0.2% / 10 °C ≤ 75% ≤ 2000 m above sea level
II (protection insulation acc. to EN61010) 2 CATIII IP40 housing, IP20 terminals
LCD Lexan 940 (polycarbonate) V-0 acc. to UL94, self-extinguishing, non-dripping, free of halogen approx. 400 g 78.5 x 65.5 x 106.5 mm
175316 [60...300 V AC/DC] 195009 [24...60 V AC/DC]



SIRAX BT5100



SIRAX BT5200



SIRAX BT5300



SIRAX BT5400



## VISUALISATION

### CLEAR REPRESENTATION OF MEASURED VALUES

The LCD display shows measured values directly on site.

- Display of input and output parameters
- High-contrast display with backlight for good reading of measurement values
- Clear and unambiguous display of measured data
- Simple navigation via two push buttons



### SIMPLE ON-SITE PROGRAMMING OF MEASURED VALUES

The following parameters can be set directly on site by means of the LCD display and two push buttons.

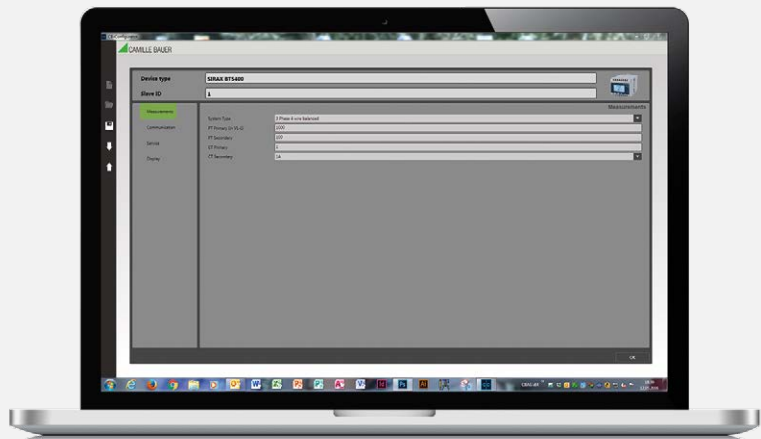
- Network configuration
- Values of current and voltage transformers
- Input and output parameters
- Communication parameter Modbus RTU
- Password protection



### ADDITIONAL PROGRAMMING OF MEASURED VALUES VIA CB-CONFIGURATOR SOFTWARE

Via RS485 (Modbus RTU) interface and the CB-Configurator software the measured values may be programmed even more easily.

- Devices may be selected directly in the software
- Setting of input and output parameters
- Offline parameterization of measured values
- Loading and storage of configuration
- Upload of predefined configurations to several devices at the same time
- Password protection







# SMARTCOLLECT® SC<sup>2</sup>



**Building management system and enterprise applications**

**Upstream**

- Modbus/TCP
- OPC UA
- BACnet
- SNMP
- DNP3
- IEC61850 MMS
- RESTful API
- DDE
- etc.



**Multiple users**

**SMARTCOLLECT SC<sup>2</sup>**

**Downstream**

- Modbus/TCP
- Modbus/RTU
- etc.

**Features**



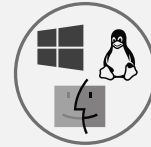
Open platform



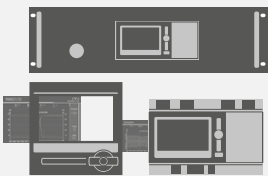
Web-based and secure including RBAC



Native cloud support



Operating system agnostic (Windows, Linux, MacOS)



Cyber secure Camille Bauer devices



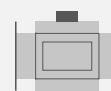
Third-party devices



Gas meter



Energy meter



Flow



Temperature



Water meter



To see the benefits for yourself, visit our live page: [www.scada-smartcollect.com](http://www.scada-smartcollect.com)



**CAMILLE BAUER**

GMC-INSTRUMENTS GROUP

Camille Bauer Metrawatt AG  
Aargauerstrasse 7 • 5610 Wohlen • Switzerland  
TEL +41 56 618 21 11

[www.camillebauer.com](http://www.camillebauer.com) • [sales@camillebauer.com](mailto:sales@camillebauer.com)