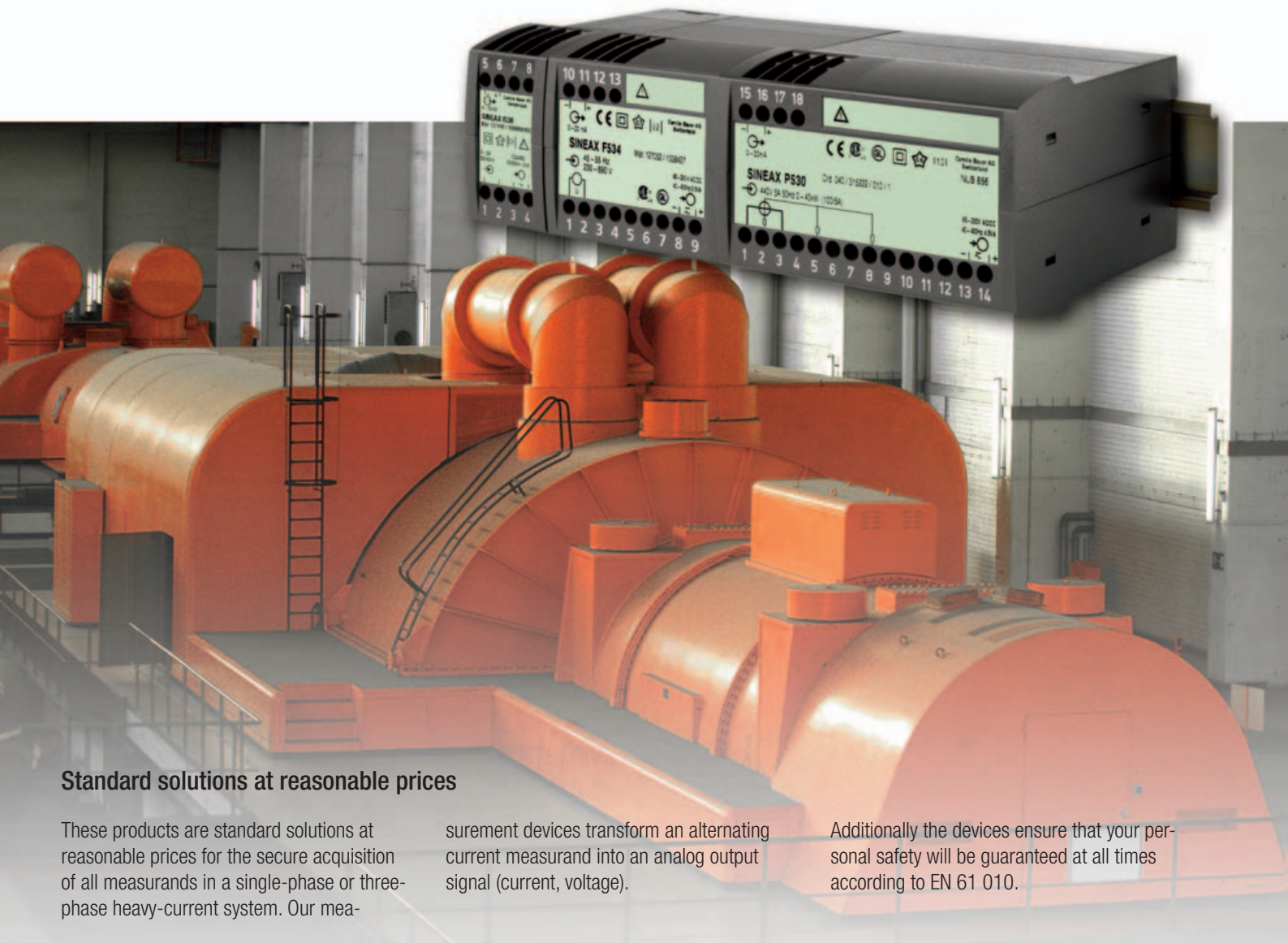




**Measuring transducers
for heavy-current measurands**

SINEAX

From conventional transducers...



Standard solutions at reasonable prices

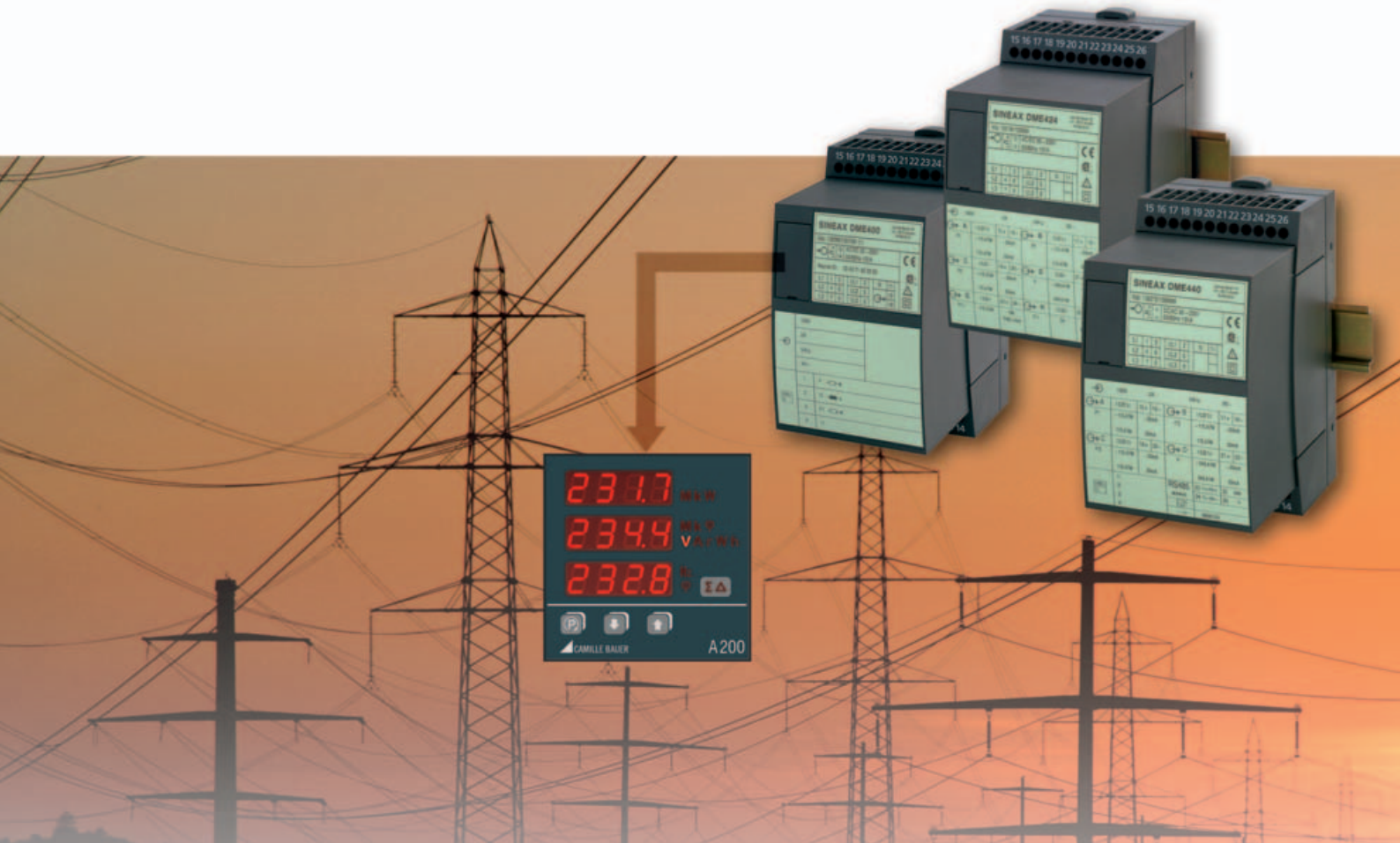
These products are standard solutions at reasonable prices for the secure acquisition of all measurands in a single-phase or three-phase heavy-current system. Our mea-

surement devices transform an alternating current measurand into an analog output signal (current, voltage).

Additionally the devices ensure that your personal safety will be guaranteed at all times according to EN 61 010.

Typ	Measurands	Output signals	Special features	Power system	Housing width
I542	AC current	U, I	Self-powered	Single-phase	35 mm
I538	AC current	U, I	With power supply or 2-wire	Single-phase	35 mm
I552	AC current	U, I	RMS value measurement	Single-phase	70 mm
U543	AC voltage	U, I	Self-powered	Single-phase	35 mm
U539	AC voltage	U, I	With power supply or 2-wire	Single-phase	35 mm
U553	AC voltage	U, I	RMS value measurement	Single-phase	70 mm
U554	AC voltage	U, I	Diff. characteristics/RMS value measurement	Single-phase	70 mm
P530	Active power	U, I		Single-phase, 3-/4-phase balanced or unbalanced	105 mm
Q531	Reactive power	U, I		Single-phase, 3-/4-phase balanced or unbalanced	105 mm
F534	Frequency	U, I		L – 0 or L – L	70 mm
F535	Frequency difference	U, I		U1 – U2	70 mm
G536	Phase angle	U, I	$\cos \varphi$ or φ proportional	Single-phase, 3-/4-phase balanced	70 mm
G537	Phase angle difference	U, I	$\cos \varphi$ or φ proportional	U1 – U2	70 mm
M561, M562, M563	P, Q, S, I~, U~, f, LF, $\cos \varphi$ (PF), $\sin \varphi$ (QF)	U, I	Configurable, 1, 2 or 3 electrical isolated outputs	Single-phase, 3-/4-phase balanced or unbalanced	105 mm

...up to multi-functional measurement devices



Multi-talents strong in communication

CAM and DME4 series are multi-talents and strong in communication. They measure all standard measurands in a power system at the same time and may communicate them to the operator or control system in many different ways.

The devices of the DME4 series acquire up to 43 present measurands (class 0.2) and additionally are able to monitor your energy consumption by means of standard built-in

meters for active or reactive energy (class 1 resp. class 2).

SINEAX CAM is designed for measurement in electrical distribution systems or industrial plants. Consistent measurement guarantees that any system change is reliably acquired and included in the measured data. The high-performance measuring system makes the device also suitable for strongly distorted systems.

The I/O interface may be arranged as required. Up to 4 modules with different functionality may be used. The logger permits long-term recording of measured value progressions, lists record definable events, alarms and system messages chronologically. The optional display is intended for on-site visualisation of measured data and list entries.

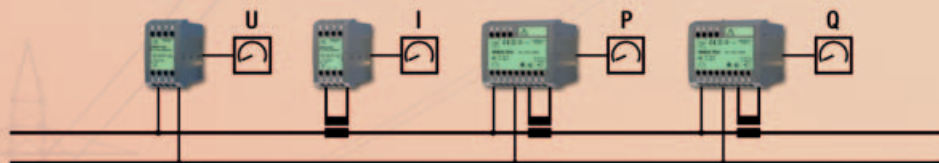
Type	Measurands	Output signals		Configuration/ A200-interface	Communication interface	Transmission protocol
		analog	digital			
DME 424	P, Q, S,	2	4	RS 232	—	—
DME 442	I~, U~, S,	4	2	RS 232	—	—
DME 440	cos φ (PF),	4	—	RS 232	RS 485	Modbus
DME 401	sin φ (QF),	—	—	RS 232	RS 485	Modbus
DME 400	LF,	—	—	RS 232	LON FTT-10A	LonTalk
DME 406	f	—	—	RS 232	RS 485	Profibus DP

Type	Controlling, Analyzing, Metering	Selectable I/O interface	Interfaces
CAM	System state, energy consumption, system analysis, Recording with time, external quantities via I/O	Analog inputs / outputs, Digital inputs / outputs	Modbus/RTU and USB, optional Ethernet with Modbus/TCP or IEC 61850

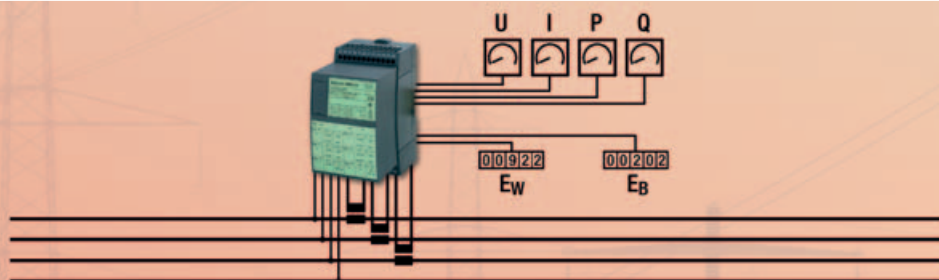
SINEAX

We offer solutions for all requirements

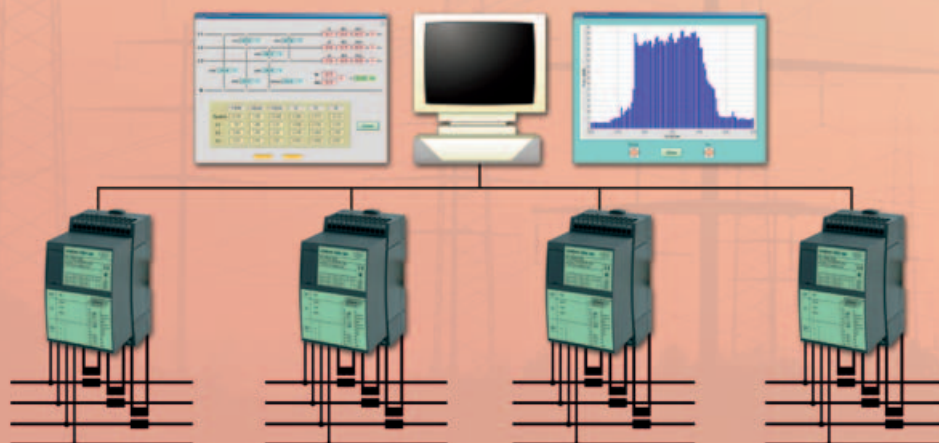
Conventional



Multi-functional



Multi-functional
and
strong in communication



 **CAMILLE BAUER**

Rely on us.

Camille Bauer AG
Aargauerstrasse 7
CH-5610 Wohlen / Switzerland

Phone +41 56 618 21 11
Fax +41 56 618 21 21

info@camillebauer.com
www.camillebauer.com